

Overview of the Foundation
2022

AINU

The background of the cover is a complex, abstract composition of organic, flowing shapes in a palette of red, blue, yellow, and black. Overlaid on this are several stylized Ainu motifs. In the upper right, a large red shape contains a stylized bird or animal head in yellow and black. On the left, a blue vertical shape features a fan-like motif at the top. Below this, a yellow vertical shape has a complex, woven or beaded pattern. In the center, a yellow bowl-like shape sits on a black base. To the right, a blue shape resembles a traditional Ainu garment or a stylized figure. The overall effect is a vibrant, modern interpretation of traditional Ainu art.

The Foundation for Ainu Culture

Message from the President



TSUNEMOTO Teruki
President
The Foundation for Ainu Culture

Building a Society Where the Ethnic Dignity of the Ainu People is Respected

Irankarapte. The Ainu are an indigenous people who have lived in the northern part of the Japanese Archipelago, especially in Hokkaido. They have their own language and have developed a rich, diverse culture that includes *Yukar* and many other forms of outstanding oral literature, Ainu patterns used to decorate clothes and craftworks, and the *Iyomante* ritual. In modern and contemporary history, however, Ainu society and culture have severely suffered and many Ainu people have been forced to live in poverty and have experienced discrimination.

Given such, the Act on the Promotion of Ainu Culture, and Dissemination and Enlightenment of Knowledge about Ainu Tradition, etc. was enacted in May 1997 with the aims of promoting Ainu culture and realizing a society in which the ethnic pride of the Ainu people is respected and of contributing to the development of diverse cultures in Japan. The Foundation was established in June of the same year with the support of the national government (the Ministry of Land, Infrastructure, Transport and Tourism and the Ministry of Education, Culture, Sports, Science and Technology) and the Hokkaido Government. The Foundation has since undertaken various projects throughout Japan to support steady progress in research on the Ainu, the promotion of Ainu culture / language and the dissemination of knowledge regarding Ainu traditions.

Both the House of Representatives and the House of Councilors unanimously adopted “the Resolution Seeking to Recognize the Ainu People as an Indigenous People” in 2008, and the Final Report of the Advisory Council for Future Ainu Policy was released in 2009, which advocated the establishment of a comprehensive Ainu policy based on the recognition of the Ainu as an indigenous people of Japan.

The Act on the Promotion of Measures to Achieve a Society in Which the Dignity of the Ainu People is Respected was enacted in April 2019, and in May of the same year the Foundation was designated as the sole corporation in the nation recognized to carry out the work stipulated in the act. In addition to Ainu cultural promotion projects that the Foundation had been involved in, the Foundation was put in charge of the operation and management of the National Ainu Museum and Park “Upopoy,” which opened in July 2020.

Amid such changes in circumstances surrounding Ainu policy, the Foundation intends to make further efforts to realize a society where the Ainu’s dignity is respected, while promoting coordination with the national and Hokkaido governments and related organizations. Therefore, we sincerely ask for the understanding and support of the many related parties.

This booklet gives an overview of the organization of the Foundation and its undertakings. It is our pleasure if the booklet helps you broaden your knowledge of Ainu culture and our efforts to promote it and deepen the understanding of the Foundation.

Iyairaiiker.

Contents

History	02
Organization	04
Operational Policy	08
Project Overview	10
Recruitment of New Supporting Members	21

History



May 1965

An Ainu settlement in Shiraoi known as Shiraoi Kotan is relocated to the shore of Lake Poroto and is named Poroto Kotan. Shiraoi Kanko Consultants Co., Ltd. begins operating Poroto Kotan.

June 1967

The Shiraoi Municipal Folk Museum opens at Poroto Kotan.

September 1976

Shiraoi Kanko Consultants Co., Ltd. is dissolved to establish the Shiraoi Foundation for the Transmission and Preservation of Ainu Culture.

April 1984

The Ainu Museum, a new facility for the regular exhibition of Ainu folk arts and crafts, opens.

○ Former Ainu Museum

○ Former Foundation for Research and Promotion of Ainu Culture

○ The Foundation for Ainu Culture

March 1990

The foundation is renamed the Ainu Museum.

May 1997

The Act on the Promotion of Ainu Culture, and Dissemination and Enlightenment of Knowledge about Ainu Tradition, etc. (Ainu Culture Promotion Act) is announced on May 14.

June 1997

The Hokkaido Development Agency (the present Ministry of Land, Infrastructure, Transport and Tourism) and the Ministry of Education (the present Ministry of Education, Culture, Sports, Science and Technology), which are the administrative agencies in charge, approve the establishment of the Foundation for Research and Promotion of Ainu Culture on June 27 as a public interest corporation in accordance with Article 34 of the Civil Law. For the establishment, arrangements were made in advance by the Hokkaido Government.

July 1997

The Ainu Culture Promotion Act takes effect on July 1. On the same day, the Foundation's office opens in Sapporo, Hokkaido, and the Ainu Culture Center opens in Tokyo on September 13 to launch its operations.

November 1997

In accordance with the Act on the Promotion of Ainu Culture, the Foundation is designated by the ministries in charge on November 26 as the sole corporation in the nation that is recognized to carry out the services provided in the law.

April 2005

The Shiraoi Municipal Folk Museum (the old building) and Ainu folk cultural assets owned by the town of Shiraoi are handed over.

April 2013

In accordance with the reform of the system of public interest corporations, the Ainu Folk Museum is registered as a general incorporated foundation and starts operations on April 1.

April 2013

In accordance with the reform to the system of public-interest corporations, the Foundation for Research and Promotion of Ainu Culture re-registers as a public-interest incorporated foundation and starts services on April 1.

May 2017

The government's Council for Ainu Policy Promotion suggests that it is appropriate to designate an entity with experience in the implementation of projects based on the Ainu Culture Promotion Act as the management body of a symbolic space for ethnic harmony and announces a policy of enhancing that management by making the most of the workforce and knowledge of the Ainu Museum.

April 2018

The Ainu Museum (a general incorporated foundation) and the Foundation for Research and Promotion of Ainu Culture (a public interest incorporated foundation) merge to become a public interest incorporated foundation that is named the Foundation for Ainu Culture and that starts services on April 1.

April 2019

The Act on the Promotion of Measures to Realize a Society Where the Dignity of the Ainu People is Respected (Ainu Measures Promotion Act) is promulgated.

May 2019

The Ainu Measures Promotion Act is enforced on May 24. On May 24, the Foundation is designated as a corporation that manages the National Ainu Museum and Park (hereinafter referred to as Upopoy), a symbolic space for ethnic harmony, by the Minister of Land, Infrastructure, Transport and Tourism and the Minister of Education, Culture, Sports, Science and Technology based on the Ainu Measures Promotion Act.

July 2020

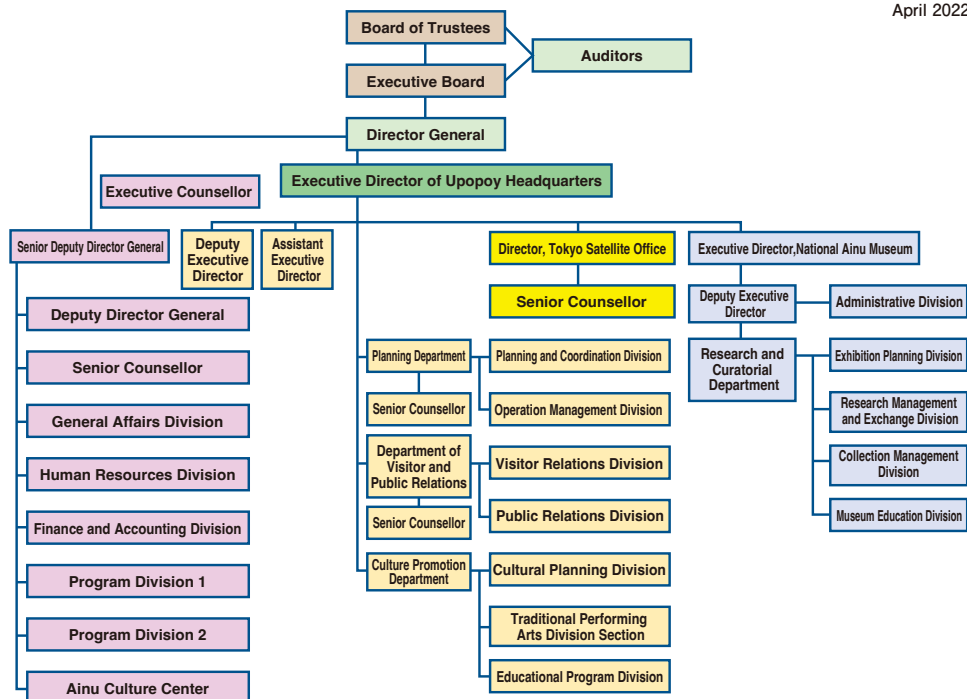
Upopoy opens on July 12.

Organization



The Foundation for Ainu Culture Organizational Chart

April 2022



Offices

- **Foundation Office**
Presto 1.7 Bldg. 5F, Kita 1-jo Nishi 7-chome, Chuo-ku, Sapporo, Hokkaido, 060-0001, Japan
- **National Ainu Museum and Park Management Headquarters**
2-3-2, Wakakusa-cho, Shiraoi Town, Siraoi District, Hokkaido, 059-0902, Japan
- **Ainu Culture Center**
Sumitomo Fudosan Ueno-okachimachi Bldg. 3F, Motoasakusa 3-chome 7-1, Taito-ku, Tokyo, 111-0041, Japan

Endowment

190,555,262 yen

Scope of activities

All prefectures of Japan

Operational fund

The operational fund is provided by subsidies and consignment fees from the national government (the Ministry of Land, Infrastructure, Transport and Tourism and the Ministry of Education, Culture, Sports, Science and Technology) and the Hokkaido Government.

List of trustees and officials of the Foundation for Ainu Culture

Trustees (23)

Post	Name	Status
Trustee	AKIBE Hideo	Executive Director of the Akan Ainu Industrial Arts Association
Trustee	DEI Hiroyoshi	Secretary-General of the Hokkaido Association of City Mayors
Trustee	DERIHA Koji	Instructor at the Open University of Japan
Trustee	FUJIWARA Kentatsu	President of the Eniwa Ainu Association
Trustee	FUKUSHIMA Kenichi	Former Auditor of the Hokkaido Federation of Town and Village Board of Education
Trustee	HARAKO Osamu	Professor Emeritus at Sapporo University
Trustee	ITO Koichi	Civil Rights Commissioner (Lawyer)
Trustee	KAIZAWA Koichi	Vice Chairman of the Hokkaido Ainu Traditional Dance Preservation Association
Trustee	KAYANO Shiro	Director of the Kayano Shigeru Nibutani Ainu Museum
Trustee	KONNO Kuninori	Former Chairman of the Shiraoi Town Social Welfare Association
Trustee	MASUDA Yoshimichi	Managing Director of Shiraoi Mosir
Trustee	NIKAIIDO Toshifumi	Director and Planning Office Manager of Hokkaido Shimbun Press
Trustee	OGAWA Yuji	Director of the Ainu Association of Hokkaido (President, Shibetsu Ainu Association)
Trustee	OKADA Ikuko	Vice President of the Shiraoi Ainu Association
Trustee	OSUGA Rueko	Leader of Shiraoi Ainu Language Class
Trustee	SAITO Reiko	Associate Professor at the Department of Modern Society and Civilization, National Museum of Ethnology
Trustee	SHIBATA Tatsuo	Director of the Hokkaido Association of Towns and Villages
Trustee	SHIIKU Takeo	Director of the Ainu Association of Hokkaido (President, Yakumo Ainu Association)
Trustee	SHIRASAKI Koji	Former Deputy Mayor of Shiraoi Town
Trustee	TAKAGI Kikue	Chair of the Association of Sinotcha
Trustee	TAKEHANA Kenichi	Vice President and Senior Director of the Hokkaido International Exchange and Cooperation Center (HIECC)
Trustee	YAHATA Tomoko	Secretary-General of the Kanto Utari Association
Trustee	YAMADA Yuji	Auditor of the Shiraoi Folk Performing Arts Preservation Society

Board Members (21)

Post	Name	Status
President	TSUNEMOTO Teruki	Professor Emeritus at Hokkaido University
Senior Vice President	TSUSHIMA Kazunobu	Secretary General of the Foundation for Ainu Culture
Senior Vice President	KATO Tadashi	Former Executive Director of the Ainu Association of Hokkaido
Senior Vice President	NOMOTO Katsunobu	Representative Director of the Former Ainu Museum
Vice President	FUKUI Hiroyuki	Executive Counsellor of the Foundation for Ainu Culture
Vice President	MURAKI Miyuki	Deputy Executive Director of the National Ainu Museum and Park Management Headquarters, Foundation for Ainu Culture
Vice President	SASAKI Shiro	Executive Director of the National Ainu Museum and Deputy Executive Director of the National Ainu Museum and Park Management Headquarters, Foundation for Ainu Culture
Member	HASEGAWA Kunihiro	President of the Shiraoi Folk Performing Arts Preservation Society
Member	KAWAMURA Hisae	Vice Chairman of the Asahikawa Ainu Council
Member	KAWASHIRO Kunihiro	CEO, Ishikari Bay New Port Service
Member	NAKAMURA Yoshio	Vice Executive Director of the Ainu Association of Hokkaido (President, Chitose Ainu Association)
Member	OGAWA Tetsuya	Managing Director of the Ainu Association of Hokkaido (President, Honbetsu Ainu Association)
Member	OHKAWA Masaru	Executive Director, the Ainu Association of Hokkaido (President, Shin-Hidaka Ainu Association)
Member	SAKITANI Yasufumi	Professor Emeritus at Aomori University
Member	SASAKI Ryoko	Fellow at Hokkaido University Nitobe College
Member	SASAKI Toshikazu	Invited Faculty Member of the Center for Ainu & Indigenous Studies, Hokkaido University
Member	SATO Seiyuki	Senior Advisor of Hokkaido Tourism Organization
Member	UJI Yoshiyuki	Director of the Ainu Association of Hokkaido (President, Toyoura Ainu Association)
Member	YAMAZAKI Kazuhiko	Fellow at Hokkai Gakuen Institute for Northeast Asia Studies
Auditor	KONDO Yuji	Managing Director of the Hokkaido Women's Association
Auditor	OHHASHI Kiyoshi	Ohashi Kiyoshi Accounting Office (Certified Public Accountant)

List of the Foundation for Ainu Culture Members of Program management committee

Members of program management committee (10)

Post	Name	Status
Chairman	KATO Tadashi	Former Executive Director of the Ainu Association of Hokkaido
Vice Chairman	NAKAMURA Yoshio	Vice Executive Director of the Ainu Association of Hokkaido (President, Chitose Ainu Association)
Member	KIKUCHI Motohiro	Executive Director of the Chitose Aquarium
Member	MOCHIDA Makoto	Curator at the Urahoro Municipal Museum
Member	OGAWA Tetsuya	Managing Director of the Ainu Association of Hokkaido (President, Honbetsu Ainu Association)
Member	SHIROISHI Rina	Curator at the Kushiro City Museum
Member	SUGAWARA Katsuyoshi	Specialist in Ainu culture, Shin-Hidaka Town
Member	TONOSAKI Ikumi	Director of the Ainu Association of Hokkaido (Date City social worker)
Member	UJI Yoshiyuki	Director of the Ainu Association of Hokkaido (President, Toyoura Ainu Association)
Member	USA Teruyo	Representative of AYNUTOMTE

Budget for FY 2022 (Initial)

(Unit: 1,000 yen)

Item	Budget	Previous year's budget
I. Changes in general net assets		
1. Ordinary profits		
Basic asset investment profits	40	40
Operating profits	956,013	1,104,028
Grants	5,028,973	5,401,315
Donations	500	500
Membership fees	500	500
Miscellaneous revenue	0	0
Total ordinary profits	5,986,026	6,506,383
2. Ordinary expenses		
Accounting of projects for public interest purposes	5,720,599	6,228,166
Profitable business accounting	44,755	52,120
Corporate accounting	222,685	225,049
Total ordinary expenses	5,988,039	6,505,335
Current changes in ordinary profits	△2,013	1,048
3. Extraordinary profits	0	0
4. Extraordinary expenses	0	0
Current change in extraordinary profits	0	0
General net assets at beginning of year	195,835	205,945
General net assets at end of year	191,943	204,782
II. Designated net assets at end of year	104,800	100,000
III. Net assets at end of year	296,743	304,782

Operational Policy



The Foundation for Ainu Culture

FY 2022 Project Policy

Decisions by the Executive Board on March 2, 2022

1. Basic concept of project operations

Projects for FY 2022 shall be operated for the promotion of the development and public understanding of Ainu culture and the realization of a society in which the Ainu's pride is respected, while the wishes of Ainu-related parties are respected and communications with related organizations and government agencies are facilitated.

Measures related to the operation of the National Ainu Museum and Park (Upopoy), which opened in July 2020, shall be promoted through, for instance, the facilitation of smooth operation, deliberations on project enhancements and the implementation of actions, all based on continued discussions with the national government and relevant organizations.

2. Project promotion

The Foundation for Ainu Culture will continue its projects for the promotion of Ainu culture, the dissemination of Ainu traditions, and awareness-raising based on its five basic policies. The projects include Ainu language education, Ainu cultural promotion, and the dissemination of knowledge about Ainu traditions. It will also continue the initiative launched last year to develop infrastructure for Ainu language education in order to establish effective and efficient teaching and learning methods. Efforts will also be made to disseminate information more effectively using visual materials, such as Ainu cultural awareness DVDs produced in fiscal year 2021, so as to promote the public interest in, and understanding of, the history and culture of the Ainu people.

Through the Project for the Operation of Upopoy National Ainu Museum and Park, the Foundation will promote accurate knowledge and understanding of Ainu history and culture in Japan and elsewhere more effectively. To achieve the goal of one million visitors per year, it will improve its facilities and features through enhanced visitor services and other programs, including the provision of facility information and multilingual services, while offering traditional performing arts programs and participatory programs at the Cultural Exchange Hall and planning permanent and special exhibitions with explanations of exhibits at the Museum. The Foundation will also place Upopoy front and center in the creation and development of new aspects of Ainu culture in Japan by coordinating with Ainu communities that pursue robust cultural transmission activities and networking initiatives, in order to revitalize Ainu culture with that coordination at the core.

The Foundation also promotes initiatives to cultivate the spirit of hospitality that is essential to the staff who operate Upopoy National Ainu Museum and Park, while further promoting publicity and visitor attraction activities. These activities include holding timely events at Upopoy, enriching programs to enhance visitor satisfaction, and launching promotional activities designed to enhance public awareness of Upopoy and its appeal.

Project Overview



The Foundation for Ainu Culture Project Overview (Table of contents)

Chapter1 Ainu Culture Promotion and Ainu Tradition Dissemination/Education Projects

I. Promotion of comprehensive and practical research on the Ainu

1. Ainu-related research	12
--------------------------------	----

II. Promotion of Ainu language

1. Ainu language education	12
① Training instructors	
② Advanced language classes	
③ Beginner language classes	
(a) Ainu language learning for parents and children	
(b) Introductory language classes	
④ Development of infrastructure for Ainu language education	
2. Dissemination of Ainu language	13
① Courses for Ainu language transmission	
(a) Radio courses	
(b) Video courses	
② Speech contests	

III. Promotion of Ainu culture

1. Transmission and reproduction of Ainu culture	13 ~ 14
① Manual preparation	
② Practical advanced courses	
(a) Training storytellers to pass down oral literature	
(b) Training instructors to pass down traditional culture, including woodcarving and embroidery	
③ Subsidization of activities to produce replicas of traditional Ainu craftwork	
④ Project for the Handing Down of Manners and Customs	
2. Ainu cultural exchanges	14
① Ainu cultural exchanges	
(a) Subsidizing domestic cultural exchanges	
(b) Subsidizing international cultural exchanges	
② Youth intercultural study and exchange	

3. Dissemination of Ainu culture	14
① Subsidization of traditional craftwork exhibitions and releases	
② Dispatch of advisors	
③ Craftwork exhibitions	
④ Cultural festival	
4. Recognition of Ainu cultural activities	15
① Craftwork contests	
② Ainu Cultural Award	
5. Japan Cultural Expo Special Exhibit "Ainu Culture Festival" ...	16

IV. Dissemination of knowledge about Ainu traditions

1. Promotion of public awareness	16 ~ 17
① Provision of public information	
(a) Publishing leaflets and other materials	
(b) Internet website	
② Preparation and distribution of supplementary textbooks for elementary school, junior high school and high school students	
③ Dissemination of knowledge about the Ainu for parents and children	
④ Seminars	
⑤ Lectures	
⑥ <i>Irankarapte</i> Campaign	
2. Activities of the Ainu Culture Center	17

V. Training of successors to Ainu culture

1. Training successors to Ainu culture	18
--	----

Chapter 2 Operation of Symbolic Space for Ethnic Harmony

I. Operation of Symbolic Space for Ethnic Harmony and other activities

1. Administration of National Ainu Park and others	
2. Administration of National Ainu Museum	
3. Management of the Memorial Site	
4. Archiving of Ainu language	

II. Profit making from Symbolic Space for Ethnic Harmony

1. Tenant management	
2. Parking space	
3. Other businesses	

Chapter 1 Ainu Culture Promotion and Ainu Tradition Dissemination/Education Projects

I. Promotion of comprehensive and practical research on the Ainu

1. Ainu-related research Unit: 1,000 yen. Figures in parentheses are budgets for FY 2021. (The same applies below.) [18,200(18,200)]

Subsidies are given for projects involving comprehensive and practical research on the Ainu, as well as for the publication of research results, in order to support and foster researchers on Ainu and to facilitate the publication of research results and other findings.

- ◇ Research subsidies: Research subsidies are granted for projects involving comprehensive and practical research on Ainu society and culture.
- ◇ Publication subsidies: Publication subsidies are granted for projects involving the production of publications on Ainu society and culture that have not been published previously because they do not have commercial value or that are difficult for researchers to obtain because they were published privately and exist only in limited numbers.

II. Promotion of Ainu language

1. Ainu language education [21,484(21,004)]

① Training instructors [5,200(5,188)]

Learning opportunities are provided for those who intend to become Ainu language instructors, in which effective teaching methods are taught based on the basic grammar and linguistics of the Ainu language in cooperation with Ainu language researchers. It is thereby aimed to establish Ainu language teaching methods and to improve the foundation for Ainu language education.

- ◇ Schooling classes
- ◇ Follow-up classes

② Advanced language classes [4,780(4,784)]

Advanced intensive Ainu language classes are offered to train intermediate-level speakers to the level of advanced speakers who can become Ainu language instructors in the future.

③ Beginner language classes

(a) Ainu language learning for parents and children [3,104(3,106)]

This project is designed for Ainu parents and children to promote the Ainu language and preserve Ainu traditions and culture with the cooperation of Ainu language speakers and researchers.

(b) Introductory language class [2,644(2,644)]

An introductory Ainu language course for beginners is offered to those who are willing to learn and inherit the Ainu language in order to increase and broaden the base of Ainu language learners, leading to the training of intermediate and advanced speakers.

④ Development of infrastructure for Ainu language education [5,756(5,282)]

The Ainu language is listed as critically endangered by the UNESCO, and the restoration of the Ainu language is regarded as an extremely important task. In this sense, our goal is to establish effective and efficient Ainu language teaching/learning methods in order to enhance the foundation of Ainu language education.

2. Dissemination of Ainu language

[30,444(30,438)]

① Courses for Ainu language transmission

[27,460(27,434)]

(a) Radio courses

[19,543 (19,543)]

To disseminate the Ainu language to the general public, this project provides opportunities for many people to have contact with and learn the Ainu language, and the project facilitates understanding of the Ainu and their traditions and culture by broadcasting Ainu language courses for beginners on STV (Sapporo Television Broadcasting Co.Ltd.) radio.

Radio course textbooks are provided free of charge, and CDs containing recorded broadcast lessons are available for check out. For details, contact the office (in Sapporo) of the Foundation for Ainu Culture or the Ainu Culture Center (in Tokyo).



Textbooks for FY 2021 radio lessons

◇ Radio courses: 7:00 - 7:15 a.m. on Sundays

The radio broadcast is also available on the Internet
(STV's website at [<https://www.stv.jp/radio/ainugo/index.html>])

(b) Video courses

[7,917 (7,891)]

By offering Ainu language video courses for beginners, we aim to provide many people with an opportunity to come into contact with and learn the Ainu language. Our aims also include helping to promote and popularize the Ainu language and to advance an understanding of Ainu language and culture.

◇ Video courses

The Foundation for Ainu Culture's website at
[<https://www.ff-ainu.or.jp/web/learn/language/movie/>]

② Speech contests

[2,984(3,004)]

Ainu language speech contests are held to disseminate the Ainu language among the general public as well as improve the motivation of Ainu language learners.

Scheduled date for FY 2022 Speech Contest

November 3 (Thu.)

Kitagas Culture Hall (Chitose Citizens Culture Center) (Chitose City, Hokkaido)

III. Promotion of Ainu culture

1. Transmission and revitalization of Ainu culture

[62,396(64,282)]

① Manual preparation

[16,120(16,186)]

Traditional Ainu lifestyles and cultural assets, both tangible and intangible, come in various forms. However, many of the traditional production techniques and rituals have been lost to posterity. From this perspective, a manual for reproducing the Ainu lifestyle and culture and an archive of Ainu culture transmission activities are being produced that utilize images, printed materials and other media simultaneously so that Ainu lifestyles and culture can be reproduced comprehensively and three-dimensionally. These materials are intended to be used widely by many people, facilitating the preservation and passing down of traditional Ainu production techniques and rituals.

- ◇ Productions in FY 2022:
- "Printed manual: Body protection (Biratori region)"
 - "Video image: Cooking (Urakawa region)"
 - "Archives of Ainu culture transmission Vol. 7"

② Practical advanced course

[34,484(34,504)]

(a) Training storytellers to pass down oral literature

[6,028 (5,906)]

For the purpose of training storytellers of Ainu oral literature, including *Yukar*, elderly Ainu give direct instruction on storytelling to their successors.

(b) Training instructors to pass down traditional culture, including woodcarving and embroidery [28,456(28,598)]

Advanced classes for practicing Ainu culture are held in Hokkaido and the Kanto area, where many Ainu people live, to train instructors who will become leaders of Ainu culture, including Ainu music and traditional dancing, in an effort to disseminate and promote Ainu culture.

③ Subsidizing activities to produce replicas of traditional Ainu craftwork [10,302(12,102)]

To transmit skills of traditional Ainu craftwork, subsidies are provided to partially cover the expenses of individuals or groups involved in Ainu cultural activities in order to enhance their motivation for passing down Ainu culture, knowledge and skills.

④ Project for the Handing Down of Manners and Customs [1,490(1,490)]

As part of Ainu cultural promotion measures, subsidies are granted to partially cover project expenses required for measures on the passing down of Ainu manners and customs from well-experienced and well-informed *ekasi* (grandfathers) and *fuci* (grandmothers) in order to facilitate the handing down of Ainu cultural activities.

2. Ainu cultural exchanges [59,505(59,538)]

① Ainu cultural exchanges [52,482 (52,492)]

(a) Subsidizing domestic cultural exchanges [48,581(48,590)]

Subsidies are granted to cover part of the expenses paid by cultural organizations involved in exchange projects that provide people with opportunities for direct encounters with Ainu culture through the experience of Ainu language and culture and interactions with Ainu people in order to promote the understanding of Ainu culture and Ainu cultural transmission activities.

(b) Subsidizing international cultural exchanges [3,901(3,902)]

International exchanges with indigenous peoples overseas that allow groups or individuals involved in activities related to Ainu culture to learn how indigenous peoples overseas hand down and preserve their cultures and international exchanges that involve sending or inviting groups or individuals to and from overseas to introduce Ainu culture are partially subsidized in order to promote and disseminate Ainu culture.

◇ Sending of groups/individuals overseas: Project for groups or individuals involved in Ainu culture-related activities engaging in cultural exchange activities outside Japan.

◇ Invitation of groups/individuals from abroad: Project for inviting lecturers from abroad to seminars or other domestic events related to Ainu cultural activities.

② Youth intercultural study and exchange [7,020(7,046)]

Ainu youth who are interested in the handing-down and preservation of Ainu culture are provided with opportunities to interact with ethnic minorities and indigenous peoples in other countries and to learn directly from them about advanced activities in order to help Ainu youth develop a sense of responsibility as successors to Ainu culture, improve their motivation for involvement in activities to hand down and preserve Ainu culture, and enhance the foundation for cultural succession.

3. Dissemination of Ainu culture [111,738(110,940)]

① Subsidizing traditional craftwork exhibitions and releases [2,400(2,402)]

Subsidies are provided to partially cover expenses associated with the exhibitions and releases of Ainu traditional craftwork by groups or individuals involved in Ainu cultural activities in order to improve the motivation, knowledge and skills of passing on traditional art and promote activities for the transmission of Ainu traditional craftwork.

② Dispatch of advisors [29,258(29,666)]

In response to requests from culture groups and schools that intend to deepen their understanding of Ainu traditions and culture and to learn Ainu traditional techniques, people with expert knowledge and skills are dispatched as advisors to promote Ainu culture. A set of Ainu cultural experience programs for schools called the Workshop for Schools (in a package form) is also available.

◇ Total number of registered advisors: 255 (as of April 2022)

③ Craftwork exhibitions

[53,450(51,296)]

Exhibitions on Ainu craftwork are held in which Ainu folk costumes, daily tools, ritual tools, craftwork and other handiwork produced using Ainu traditional craft-making techniques are displayed to the public for the purpose of disseminating knowledge on Ainu culture and improving the motivation of Ainu to transmit their culture.

Exhibition schedule for FY 2022

ATUY : Ainu Culture Harmonized by the Sea

◇ Dates: September 23 (Fri.) – November 13 (Sun.)

at the Ishikawa Prefectural Museum of History

Dates: December 3 (Sat.) – March 5 (Sun.) at the Otaru Museum



FY 2021 Craftwork exhibitions

Lifestyle of the Ainu: Varying with time and region

④ Cultural festival

[26,630(27,576)]

The Ainu Cultural Festival is held to comprehensively introduce Ainu culture, including Ainu folk dancing, to the general public within and beyond Hokkaido so as to disseminate knowledge about Ainu people and culture among the general public and promote their understanding.

Schedule for FY 2022

◇ June 11 (Sat.): Aomori Civic Hall (Aomori City, Aomori)

◇ August 20 (Sat.): Phoenix Plaza (Fukui City, Fukui)

◇ November 12 (Sat.): Yurakucho Yomiuri Hall (Chiyoda City, Tokyo)

◇ December 24 (Sat.): Doshin Hall (Sapporo City, Hokkaido)



Ainu Cultural Festival 2021

4. Recognition of Ainu cultural activities

[10,920(10,902)]

① Craftwork contests

[7,502(7,484)]

Contests of craft products as well as contemporary art works created using Ainu patterns or other traditional techniques are held in which excellent works are recognized with awards, so as to improve production skills and promote artistic and creative activities. Entries are exhibited to provide the general public with an opportunity to appreciate Ainu folkcraft.

◇ Awards ceremony

August 22 (Mon.) at Kaderu 2・7 (Sapporo City, Hokkaido)

◇ Exhibition tour

August 19 (Fri.) – August 22 (Mon.)

at Kaderu 2・7 (Sapporo City, Hokkaido)

October 21 (Fri.) – October 23 (Sun.)

at Coach and Four Kushiro Culture Hall (Kushiro City, Hokkaido)

November 11 (Fri.) – November 16 (Wed.)

at Yurakucho Asahi Gallery (Chiyoda City, Tokyo)



FY 2021 Craftwork Contest

② Ainu Cultural Award

[3,418(3,418)]

The Ainu Cultural Award and the Ainu Cultural Encouragement Award are presented to those who have long contributed greatly to the preservation/transmission of Ainu culture and to the progress of such activities, in order to recognize their efforts and at the same time encourage other activities related to Ainu culture and encourage and promote various activities related to the passing down and promotion of Ainu culture.

FY 2022 Presentation Ceremony*

December 24 (Sat.) at Doshin Hall (Sapporo City, Hokkaido) *To be held concurrently with the Cultural Festival.

IV. Dissemination of knowledge about Ainu traditions

1. Promotion of public awareness [74,054(76,080)]

① Provision of public information [3,348(3,168)]

(a) Publishing leaflets and other materials

Leaflets and other materials that introduce Ainu traditions and culture are published so as to disseminate knowledge about Ainu traditions and culture and raise public awareness.

(b) Internet website

Information on the Ainu is provided domestically and internationally through the Internet website to disseminate knowledge on Ainu traditions and culture and raise public awareness. An English version of the website is also available for foreigners.

◇ URL: <https://www.ff-ainu.or.jp>

② Preparation and distribution of supplementary textbooks for elementary school, junior high school and high school students [21,800 (21,800)]

Supplementary textbooks are renewed in response to changes in the circumstances surrounding the Ainu and Ainu policy, including the establishment of the Ainu Policy Act and the opening of Upopoy, as well as changes in the educational environment surrounding elementary school, junior high school and high school students, including the distribution of new textbooks based on the new educational guidelines, the expansion of remote learning and other factors. In addition, supplementary reading materials are distributed to elementary school and junior high school students to help them better understand and learn about Ainu.

③ Dissemination of knowledge about the Ainu for parents and children [4,520(4,520)]

A contest of original manuscripts and illustrations for young children's picture books themed on Ainu traditions and the like is held. Excellent works will be commended and distributed to libraries around the nation and to nursery schools and other facilities in Hokkaido in order to disseminate knowledge about Ainu traditions among young children.

④ Seminars [2,044(2,072)]

Seminars on advanced study subjects related to Ainu history and culture are held to provide opportunities for people involved in school and social education to promote the dissemination of in-depth knowledge.

Scheduled date for FY 2022

◇ Sapporo

Eight times between August 2 (Tue.) and 5 (Fri.)

Twice on August 8 (Mon.) and 9 (Tue.)

Planned venue: Kaderu 2・7 (Chuo Ward, Sapporo)

◇ Tokyo

Eight times between August 23 (Tue.) and 26 (Fri.)

Twice on August 30 (Tue.) and 31 (Wed.)

Planned venue: Ainu Culture Center, Tokyo (Chuo Ward, Tokyo)

⑤ Lectures

[3,876(3,904)]

Knowledge on Ainu traditions and culture is disseminated through lectures on basic subjects themed on Ainu traditions and culture targeted widely at the general public throughout the nation in consideration of the social conditions of each region.

The Ainu Cultural Festival (see page 15) will be concurrently held at each venue.

Scheduled dates for FY 2022

- ◇ June 11 (Sat.): Aomori Civic Hall (Aomori City, Aomori)
- ◇ August 20 (Sat.): Phoenix Plaza (Fukui City, Fukui)
- ◇ December 24 (Sat.): Doshin Hall (Sapporo City, Hokkaido)

⑥ Irankarapte Campaign

[38,466(40,616)]

A campaign that uses “*irankarapte*” (an Ainu greeting) as a catchphrase is continuously developed and implemented on many occasions in cooperation with businesses, in order to provide opportunities to raise people's interest in and understanding of Ainu culture. Thus, measures to increase the familiarity with and empathy toward Ainu culture are implemented.

- ◇ Items from the Foundation's collection are displayed at airports
 - ・Kushiro Airport ・Hakodate Airport
 - ・Obihiro Airport ・Asahikawa Airport
- ◇ Information on museum and other facilities is available at Sapporo Station Ainu Culture Information Corner.



2. Activities of the Ainu Culture Center

[38,886(37,470)]

The Ainu Culture Center is a multi-functional center that serves as a place to support cultural exchanges of Ainu people living in areas in and around Tokyo and to collect and provide information on Ainu culture to the general public.

- ◇ Ainu-related books and videos are available for public access.
- ◇ Holding of an extension course on Ainu culture (monthly) Hours
 - 10 a.m. – 6 p.m. on weekdays, Saturdays and national holidays
 - Closed on the days following national holidays, Sundays, Mondays (excluding national holidays) and year-end & new year holidays (Dec. 29 – Jan. 3)

The center is fully disinfected and a mandatory mask policy is in place as measures to prevent the spread of novel coronavirus infections.

However, some lectures and events may be cancelled or the Center may have to close temporarily due to the coronavirus situation in the future or in accordance with a request from the national or local governments.

In such event, we will immediately post information on our website.



V. Training of successors to Ainu culture

1. Training successors to Ainu culture

[39,212(39,170)]

We foster human resources who have acquired the Ainu language or a wide range of skills and techniques related to Ainu culture either comprehensively or in specific fields and who can transmit their knowledge to the next generation.

Lectures and training classes are offered during day and at night to help trainees deepen their knowledge and insight as Ainu cultural leaders.



Training of successors to Ainu culture

Chapter 2 Operation of Symbolic Space for Ethnic Harmony

I. Operation of Symbolic Space for Ethnic Harmony and other activities

The National Ainu Museum and Park (Upopoy) serves as a base for reviving and developing Ainu culture, an invaluable culture of our nation that is on the verge of extinction, and as a symbolic space to create a vibrant society where the dignity of indigenous peoples is respected and diverse cultures free from discrimination flourish. Upopoy consists of the National Ainu Park, the National Ainu Museum and the Memorial Site.

As a corporation appointed based on the Ainu Policy Promotion Act, the Foundation for Ainu Culture is commissioned by the Ministry of Land, Infrastructure, Transport and Tourism and the Agency for Cultural Affairs to manage the facilities of Upopoy in an integrated manner, hold exhibitions and conduct surveys/research related to Ainu history and culture, transmit Ainu culture, train human resources, and carry out hands-on/exchange activities.



① Administration of National Ainu Park and others

The National Ainu Park honors Ainu culture that has coexisted with nature. The Park also helps to increase the understanding of Ainu culture among a wide array of visitors and to pass down Ainu culture and develop creative new Ainu culture by creating a relaxing space amidst natural splendor.

- Traditional dance performances, hands-on/exchange programs
- Publicity and the attraction of more visitors
- Facility maintenance
- Provision of services to visitors in the park
- Securing of visitor safety



② Administration of National Ainu Museum

The National Ainu Museum respects the dignity of the Ainu, an indigenous people, promotes the accurate recognition and understanding of Ainu history and culture among people at home and abroad and contributes to the development of creative new forms of Ainu culture.

- Surveys/research and exchange activities
- Education and outreach
- Planning of exhibitions
- Facility maintenance
- Collection and storage of data and other materials



③ Management of the Memorial Site

The Foundation manages the Memorial Site, which was developed to realize dignified memorial services conducted by Ainu.



④ Ainu language archives

Commissioned by the Agency of Cultural Affairs, Ainu language audio data are utilized to create an archive that can be used for Ainu language learning. In addition, human resources are trained.

II. Profit making from Symbolic Space for Ethnic Harmony

① Tenant management

The Foundation manages tenants that are attracted to Upopoy to serve traditional Ainu food and sell traditional craftwork to visitors and improves the environment for serving food and selling goods.

② Parking space

The Foundation maintains the visitors' parking area

③ Other businesses

Coin lockers and vending machines are installed for visitors. Food trucks are brought to Upopoy to offer food and beverages.

Services

- ◆ Multilingual support (up to 8 languages: Ainu, Japanese, English, Chinese [Traditional and Simplified], Korean, Russian and Thai)

- ◆ Barrier-free access
- ◆ Free Wi-Fi

Shops and restaurants (cashless payment accepted)

Entrance Center Restaurant and Food Court

The restaurant has a view overlooking Lake Poroto, and the food court is a casual space where visitors can choose from a variety of dishes.



Entrance Center Shop

The shop has original Upopoy goods, Ainu crafts, Hokkaido souvenirs, snacks, and various everyday items.

◆ Hours: 9:00am to Upopoy closing time



National Ainu Museum Shop

The shop carries Ainu crafts, original museum merchandise, and books. Visitors can purchase drinks and relax to enjoy the view overlooking Lake Poroto.

◆ Hours: 9:00am to Upopoy closing time



Dates and Hours (April 2022 to March 2023)

Period	Hours
April 1 to April 28	9:00am to 6:00pm
April 29 to July 15 August 29 to October 31	Weekdays: 9:00am to 6:00pm Weekends/national holidays: 9:00am to 8:00pm
July 16 to August 28	9:00am to 8:00pm
November 1 to March 31	9:00am to 5:00pm

* Closed on Mondays and from December 29 to January 3 (Excludes May 2 and March 20) (If Monday is a holiday, closed on the next business day)

Admission (tax included)

	General visitors	Group visitors (20 or more)
Adult	1,200 yen	960 yen
High school student (16 to 18)	600 yen	480 yen
Junior high school student and younger (15 and under)	Free	Free

* Admission tickets to museum and park (excluding special exhibitions at museum and hands-on activities)

* In Japan, most students attend high school from age 16 to 18. If you are between 16 and 18, please ask for the high school price.

Contact

The Foundation for Ainu Culture

* Designated by Japanese government to manage Upopoy

2-3-2, Wakakusa-cho, Shiraoi Town, Shiraoi District, Hokkaido, Japan 059-0902

Phone: 0144-82-3914 Fax: 0144-82-3685

For inquiries during closing times, please use the inquiry form on the following website:

<https://ainu-upopoy.jp/en/inquiry/faq/>

Please check the latest information on the Upopoy website before visiting.

Upopoy

Search

<https://ainu-upopoy.jp/en/>



Recruitment of New Supporting Members

Supporting members are invited.

Although the Foundation has been receiving financial support from the national and Hokkaido governments, it is essential to establish a management basis to promote diverse activities based on the purposes of the law.

We believe it is important to receive support from a wide range of individuals, organizations and corporations not only within Hokkaido but also in the rest of the nation. Therefore, we kindly ask you to understand our intention and join us as a supporting member.

Annual fees

■ Corporation/organization: ¥20,000 per share*

■ Individual: ¥5,000 per share

*At least one share per member

Membership benefits

■ Publications and newsletters issued by the Foundation will be delivered free of charge.

(Publications related to Upopoy management are not included.)

■ Provision of information on exhibitions, lectures and other events organized by the Foundation

■ Provision of information on festivals and events related to Ainu culture.

■ Discount on admission tickets to Upopoy

How to join

- ① Those who would like to pay the membership fee via bank transfer or postal transfer are required to proceed with the application process in advance. Please download the application form from our website, enter the necessary information and return it by post, fax or e-mail.
- ② Those who prefer credit card payment can complete the application process and pay the fee online.

For details, please visit our website at

<https://www.ff-ainu.or.jp/web/overview/about/support.html>



Use of membership fees

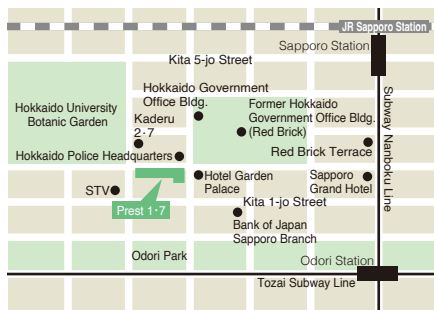
■ Membership fees are used to purchase Ainu culture-related books, photos and videos for our libraries, and to improve our other projects.

The Foundation for Ainu Culture

Presto 1.7 Bldg. 5F, Kita 1-jo Nishi 7-chome,
Chuo-ku, Sapporo, Hokkaido, 060-0001, Japan
TEL. (011)271-4171 FAX (011)271-4181
e-mail:ainu@ff-ainu.or.jp

Website:

<https://www.ff-ainu.or.jp>



NATIONAL AINU MUSEUM and PARK

2-3-2, Wakakusa-cho, Shirai Town, Sirai District,
Hokkaido, 059-0902, Japan
TEL. (0144)82-3914 FAX (0144)82-3685

Website:

<https://ainu-upopoy.jp/>



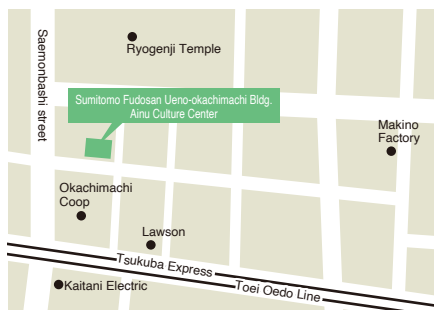
Ainu Culture Center, Tokyo

Sumitomo Fudosan Ueno-okachimachi Bldg. 3F,
Motoasakusa 3-chome 7-1, Taito-ku, Tokyo,
111-0041, Japan
TEL. (03)5830-7547 FAX (03)5830-7548
e-mail: acc-tokyo@ff-ainu.or.jp

■ Hours: 10:00 - 18:00

■ Days closed in FY 2021

- (1) Sundays (2) Mondays (excluding national holidays)
- (3) Days following national holidays (excluding Saturdays)
- (4) Jan. 1 - 3 & Dec. 29 - 31



Overview of the Foundation
2022

AINU

The background of the cover is a complex, abstract composition of organic, flowing shapes in a palette of red, blue, yellow, and olive green. Overlaid on these shapes are several stylized Ainu motifs. In the upper right, there is a large, dark silhouette of a bird, possibly a raven or crow, with a long, curved beak. To the left, a blue, elongated, and slightly curved object with a fan-like top, resembling a traditional Ainu drum (buri), is positioned diagonally. Below this, on the left side, is a yellow, vertical, lattice-like structure that looks like a traditional Ainu basket or a decorative element. In the center, there is a yellow, bowl-shaped object with a wide rim and a narrow base, possibly a traditional Ainu bowl or a decorative vessel. The overall design is bold and graphic, reflecting the rich cultural heritage of the Ainu people.

The Foundation for Ainu Culture