

PROGRAM SCHEDULE *matapa* (Winter) Nov. 1, 2025 to Apr. 24, 2026



Capacity:303

uekari cise
Cultural Exchange Hall

yayhanokkar cise
Workshop / Annex / Annex 3

ikar usi
Crafts Studio

Capacity:30

sinot cise

Capacity:60

poro cise

Capacity: 96

an=ukokor aynu ikor oma kenru
National Ainu Museum

inoka nukar tumpu
Theater

9 am			9:00 am to 4:30 pm Workshop Mukkuri for Beginners (Musical Workshop) Some charges apply			
10 am	10:00 sinot (Performing Arts) No entry or exit during performances Seat tickets required	10:00 am to 12:00 pm Workshop Annex Workshop aksinot (Archery Experience) Some charges apply	9:30 Reservation required Workshop ikarkar=an ro (Craft Workshop) Some charges apply	10:00 Workshop upopo a=ki ro (Performing Arts Workshop)	9:30 upaskuma (Life)	9:30 Ainu History and Culture (Short Film)
11 am	11:00 sinot (Performing Arts) No entry or exit during performances Seat tickets required		11:00 Reservation required Workshop inuye=an ro (Craft Workshop) Charges apply	11:00 Pon Theater (Life)	10:30 upaskuma (Life)	10:30 Ainu Crafts Gain Worldwide Attention (Short Film)
12 pm	12:00 kamuy yukar (Short Film) Seat tickets required			12:00 Workshop upopo a=ki ro (Performing Arts Workshop)	11:30 No entry or exit during performances newsar=an ro (Life)	11:30 Fudangi no Ainu (Short Film)
1 pm	1:00 imeru (Performing Arts) No entry or exit during performances Seat tickets required		12:30 Reservation required Workshop ikarkar=an ro (Craft Workshop) Some charges apply	1:00 Workshop aynuitak ari a=ye ro (Ainu Language Workshop)	12:30 upaskuma (Life)	12:30 Ainu History and Culture (Short Film)
2 pm	2:00 kamuy yukar (Short Film) Seat tickets required	2:00 pm to 4:00 pm Workshop Annex Workshop aksinot (Archery Experience) Some charges apply	2:00 Reservation required Workshop inuye=an ro (Craft Workshop) Charges apply	2:00 Pon Theater (Life)	1:30 upaskuma (Life)	1:30 Ainu Crafts Gain Worldwide Attention (Short Film)
3 pm	3:00 sinot (Performing Arts) No entry or exit during performances Seat tickets required			3:00 Workshop pirka! BINGO a=ki ro (Ainu Language Workshop)	2:30 No entry or exit during performances newsar=an ro (Life)	2:30 Fudangi no Ainu (Short Film)
4 pm	4:00 sinot (Performing Arts) No entry or exit during performances Seat tickets required		3:30 Reservation required Workshop Tonkori for Beginners (Musical Workshop)		3:30 upaskuma (Life)	3:30 Ainu History and Culture (Short Film)
5 pm	5:00 kamuy yukar (Short Film) *Available only from April 1 to April 24, 2026	Kamuy Eyes (Visual Experience) Virtual Reality (VR) experience viewed with a dedicated headset. ●10:00 am~4:00 pm ●Ages 13 and over Approx. 5 min. Capacity:6	Outside of the program, demonstrations and displays of embroidery and woodcarving works are presented.	Outside of program hours, each <i>cise</i> (traditional house) is open to visitors. ● In the <i>sinot cise</i> , visitors can freely touch kimonos, picture books, and playhouse tools.	4:30 upaskuma (Life)	4:30 *Available only from April 1 to April 24, 2026 Ainu Crafts Gain Worldwide Attention (Short Film)
6 pm	Open until 6:00 pm from April 1 to April 24, 2026					

matapa (Winter)

Nov. 1, 2025 to Mar. 31, 2026
9:00 am to 5:00 pm
Apr. 1 to Apr. 24, 2026
9:00 am to 6:00 pm

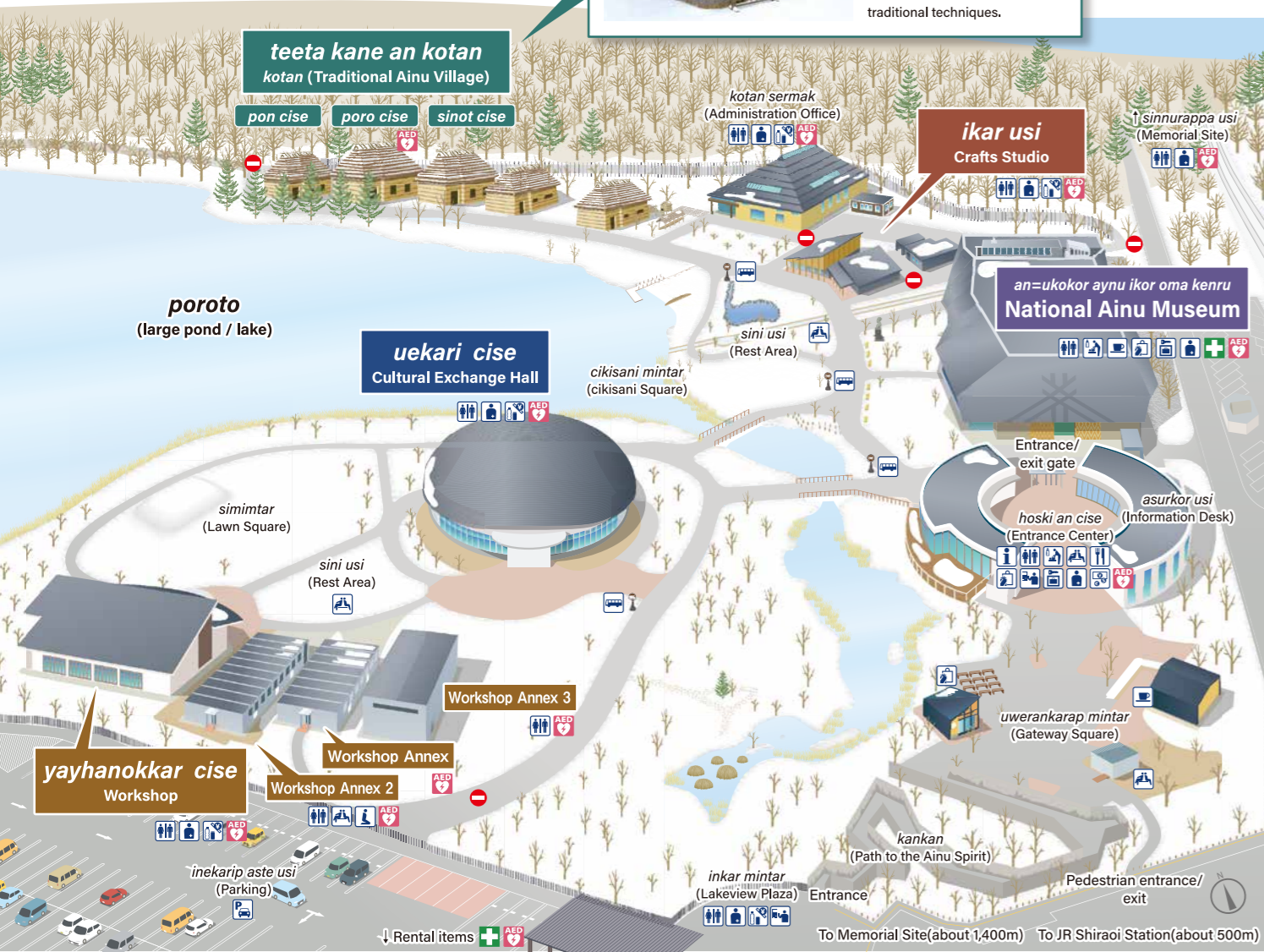
PROGRAM SCHEDULE



Saturdays, Sundays and National Holidays

uaynu kor kotan

National Ainu Museum and Park



teeta kane an kotan
In the Ainu language, a *kotan* is a village or settlement. The *kotan* at Upopoy is home to five thatched *cise* (Ainu houses), including examples made using traditional techniques.

teeta kane an kotan
Kotan (Traditional Ainu Village)

- | | | | | | |
|---------------------------|----------|-------------------------|-----------|--------------------------|-----------------|
| Information | Restroom | Nursing Room | Rest Area | Food Court | Prayer Room |
| Café | Shop | Ticket Desk | Lockers | Facilities for Ostomates | Vending Machine |
| Currency Exchange Machine | Parking | Parking Payment Machine | Bus Stop | First-Aid Station | AED |
- Items available for free rental**
Wheelchairs, strollers, umbrellas. Ask to a member of staff if you wish to rent these items.
Free Wi-Fi is available inside Upopoy | Password: upopoy01

yayhanokkar cise Workshop

Workshop Annex

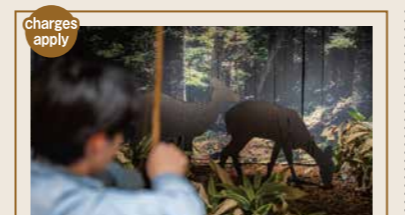
Approx. 10 min.

aksinot
(Archery Experience)

Workshop

An archery experience with a simplified bow and arrow.

- Elementary school students and above (ages 6 and over) (Elementary school students (ages 6 to 12) must be accompanied by a guardian.)
- 3 arrows per person
- You may be asked to wait during busy times



A hunting-inspired workshop using a real bow and arrow.

- Saturdays only
- Junior high school students and above (ages 13 and over)
- 6 arrows per person
- Fee: 500 yen
- You may be asked to wait during busy times

Workshop Annex 3

itak tomari
(Ainu Language Workshop)

Listen to, see, envision and speak part of the Ainu language through installation art.

- Open until 30 minutes before closing



uekari cise Cultural Exchange Hall

Approx. 20 min. Capacity: 303
Seat tickets required

sinot
(Performing Arts)

Performances of songs and dances with roots in different regions, against a backdrop of Hokkaido's magnificent natural landscapes.

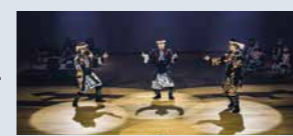
- Seat ticket required (available in front of Cultural Exchange Hall)
- Designated seating only
- No entry or exit during performances. Eating, drinking, photography, filming and audio recording are not permitted during performances.



imeru
(Performing Arts)

Performances of new songs and dances bringing arts once buried in history to life.

- Seat ticket required (available in front of Cultural Exchange Hall)
- Designated seating only
- No entry or exit during performances. Eating, drinking, photography, filming and audio recording are not permitted during performances.

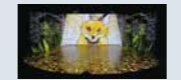


Approx. 30 min. Capacity: 303
Seat tickets required

kamuy yukar (Short Film)
Seat tickets required

Two animated short films based on Ainu legends: The Boy Who Brought Down a Kamuy and The Solar Deity Caught by Evil Fox.

- Seat ticket required (available in front of Cultural Exchange Hall)
- Designated seating only



Park wide 60 to 90 min.

An Ainu Toolbox for Life
(Puzzle Game) (In Japanese only)

- Purchase kits at the Entrance Center
- On sale from 9:00 am to 3:30 pm
- Fee: 500 yen
- Mobile device required
- For ages 10 and over



an=ukokor aynu ikor oma kenru National Ainu Museum

ikor tumpu

Permanent Exhibition and Special Exhibitions (Exhibits)

The permanent exhibition introduces the Ainu language, history and culture from the perspectives of the Ainu. In addition, special and thematic exhibitions are organized several times throughout the year.

- Eating, drinking, filming, long umbrellas and stationery other than pencils not permitted.



Approx. 60 min.

inoka nukar tumpu

Theater Screening (Short Film)

Short films introducing Ainu history and culture are shown on the large screen. In addition to *Ainu History and Culture* and *Ainu Crafts Gain Worldwide Attention*, the new film *Fudangi no Ainu* is included in the program from 2025.

- Eating, drinking, photography, filming and stationery other than pencils not permitted.



teeta kane an kotan Kotan (Traditional Ainu Village)

poro cise

Approx. 15 min. Capacity: 60

upaskuma (Life)

Learn about life in a *kotan* and experience traditional songs and dances. Each session features a different theme, including houses, boats, hunting equipment, and place names.



poro cise

Approx. 15 min. Capacity: 60

newsar=an ro (Life)

Experience Ainu oral literature through tales and lyrical songs passed down through the generations.

- No entry or exit during performances. Photography, filming and audio recording are not permitted during performances.



sinot cise

Approx. 15 min. Capacity: 30

upopo a=ki ro
(Performing Arts Workshop)

Try singing *upopo*, traditional Ainu songs unique to each region.



sinot cise

Approx. 15 min. Capacity: 30

Pon Theater
(Life)

Discover the relationship between the Ainu and the *kamuy* (spirit-deities) and learn about Ainu lives past and present through a paper theater show.



sinot cise

Approx. 30 min. Capacity: 25

pirka! BINGO a=ki ro
(Ainu Language Workshop)

Play a bingo game using Ainu words for animals and traditional items.



sinot cise

Approx. 15 min. Capacity: 30

aynuitak ari a=ye ro
(Ainu Language Workshop)

Learn everyday words in Ainu.



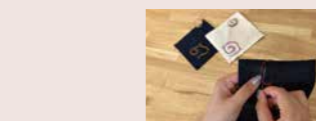
ikar usi Crafts Studio

Some charges apply. Approx. 60 min. Capacity: 20

ikarkar=an ro (Craft Workshop)
Workshop | Reservations required

Try embroidering an Ainu pattern.

- Choose from three types of items
- Reservation required (at least 5 mins. before start time)
- Ages 9 and over (Elementary school students (ages 6 to 12) must be accompanied by a guardian.)
- Fee: 1,000 yen (bag or wooden frame), free (coaster)

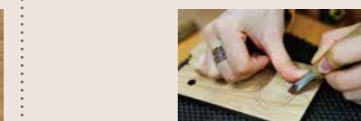


charges apply. Approx. 60 min. Capacity: 10

inuye=an ro (Craft Workshop)
Workshop | Reservations required

Try carving an Ainu pattern.

- Choose from two types of items
- Reservation required (at least 5 mins. before start time)
- Ages 9 and over (Elementary school students (ages 6 to 12) must be accompanied by a guardian.)
- Fee: 1,000 yen (coaster), 1,500 yen (smartphone stand)



Approx. 40 min. Capacity: 10

Tonkori for Beginners (Musical Workshop)
Workshop | Reservations required

Learn how to play the *tonkori* zither, then put your skills to the test.

- Reservation required (at least 10 mins. before start time)
- Ages 9 and over (Elementary school students (ages 6 to 12) must be accompanied by a guardian.)



Some charges apply. Approx. 10 min. Maximum 10 people at a time

Mukkuri for Beginners (Musical Workshop)
Workshop

Learn how to hold and play *mukkuri*, a kind of mouth harp, and create various sounds.

- Elementary school students and above (ages 6 and over) (Elementary school students (ages 6 to 12) must be accompanied by a guardian.)
- *mukkuri* available for purchase until 4:00pm
- You may be asked to wait during busy times
- Fee: 1,000 yen (free for people who bring their own *mukkuri*)

