

## Services

- ◆ Multilingual support (up to 8 languages: Ainu, Japanese, English, Chinese [Traditional and Simplified], Korean, Russian and Thai)
- ◆ Barrier-free access
- ◆ Free Wi-Fi

## Shops and restaurants (cashless payment accepted)

### Entrance Center Restaurant and Food Court

The restaurant has a view overlooking Lake Poroto, and the food court is a casual space where visitors can choose from a variety of dishes.



### Entrance Center Shop

The shop has original Upopoy goods, Ainu crafts, Hokkaido souvenirs, snacks, and various everyday items.

◆Hours: 9:00am to Upopoy closing time



### National Ainu Museum Shop

The shop carries Ainu crafts, original museum merchandise, and books. Visitors can purchase drinks and relax to enjoy the view overlooking Lake Poroto.

◆Hours: 9:00am to Upopoy closing time



## Dates and Hours (April 2022 to March 2023)

Period	Hours
April 1 to April 28	9:00am to 6:00pm
April 29 to July 15 August 29 to October 31	Weekdays: 9:00am to 6:00pm Weekends/national holidays: 9:00am to 8:00pm
July 16 to August 28	9:00am to 8:00pm
November 1 to March 31	9:00am to 5:00pm

\* Closed on Mondays and from December 29 to January 3 (Excludes May 2 and March 20) (If Monday is a holiday, closed on the next business day)

## Admission (tax included)

	General visitors	Group visitors (20 or more)
Adult	1,200 yen	960 yen
High school student (16 to 18)	600 yen	480 yen
Junior high school student and younger (15 and under)	Free	Free

\* Admission tickets to museum and park (excluding special exhibitions at museum and hands-on activities)

\* In Japan, most students attend high school from age 16 to 18. If you are between 16 and 18, please ask for the high school price.

## Contact

## The Foundation for Ainu Culture

\*Designated by Japanese government to manage Upopoy  
2-3-2, Wakakusa-cho, Shiraoi Town, Shiraoi District, Hokkaido, Japan 059-0902  
Phone: 0144-82-3914 Fax: 0144-82-3685

For inquiries during closing times, please use the inquiry form on the following website:  
<https://ainu-upopoy.jp/en/inquiry/faq/>

Please check the latest information on the Upopoy website before visiting.

Upopoy Search

<https://ainu-upopoy.jp/en/>



アイヌの世界と  
出会う場所。

Discover Ainu Culture



# Shiraoi, Hokkaido





# Upopoy National Ainu Museum and Park

## Upopoy (Symbolic Space for Ethnic Harmony)



Upopoy is a central facility that serves as the national center for the revival and the development of Ainu culture, which is under threat of extinction.

Upopoy is an Ainu name given to the National Ainu Museum and Park meaning “singing in a large group”.

### ■Main facilities at Upopoy

an=ukokor aynu ikor oma kenru

#### National Ainu Museum

Japan's first national museum featuring the indigenous Ainu people

P03•P04

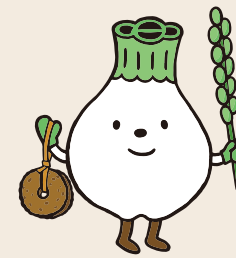
an=ukokor uaynukor mintar

#### National Ainu Park

Interactive open-air center with facilities including a Cultural Exchange Hall, Workshop, Kotan (Traditional Ainu Village), and Crafts Studio

P05•P06

### Mascot of Upopoy TureppoN



turep

Turep means “bulb of a Giant Lily” in Ainu.

po

The affix po means “small”.

### Giant Lily

A perennial in the Cardiocrinum genus of the lily family, the giant lily is native to the forests of Hokkaido and northern half of Honshu. Along with salmon and deer, this was a valuable source of food for the Ainu, and the starch extracted from it can be used as a preserved food.

### Experiencing Ainu culture at Upopoy

Upopoy offers a wealth of opportunities such as hands-on activities within the park and exhibitions at the National Ainu Museum to stimulate visitors' interest in the Ainu culture.

#### Point1 Discover

Witness the beauty of Ainu culture through unique traditions such as language and religious beliefs.

#### Point2 Feel

Experience Ainu culture through traditional performing arts, foods, and crafts.

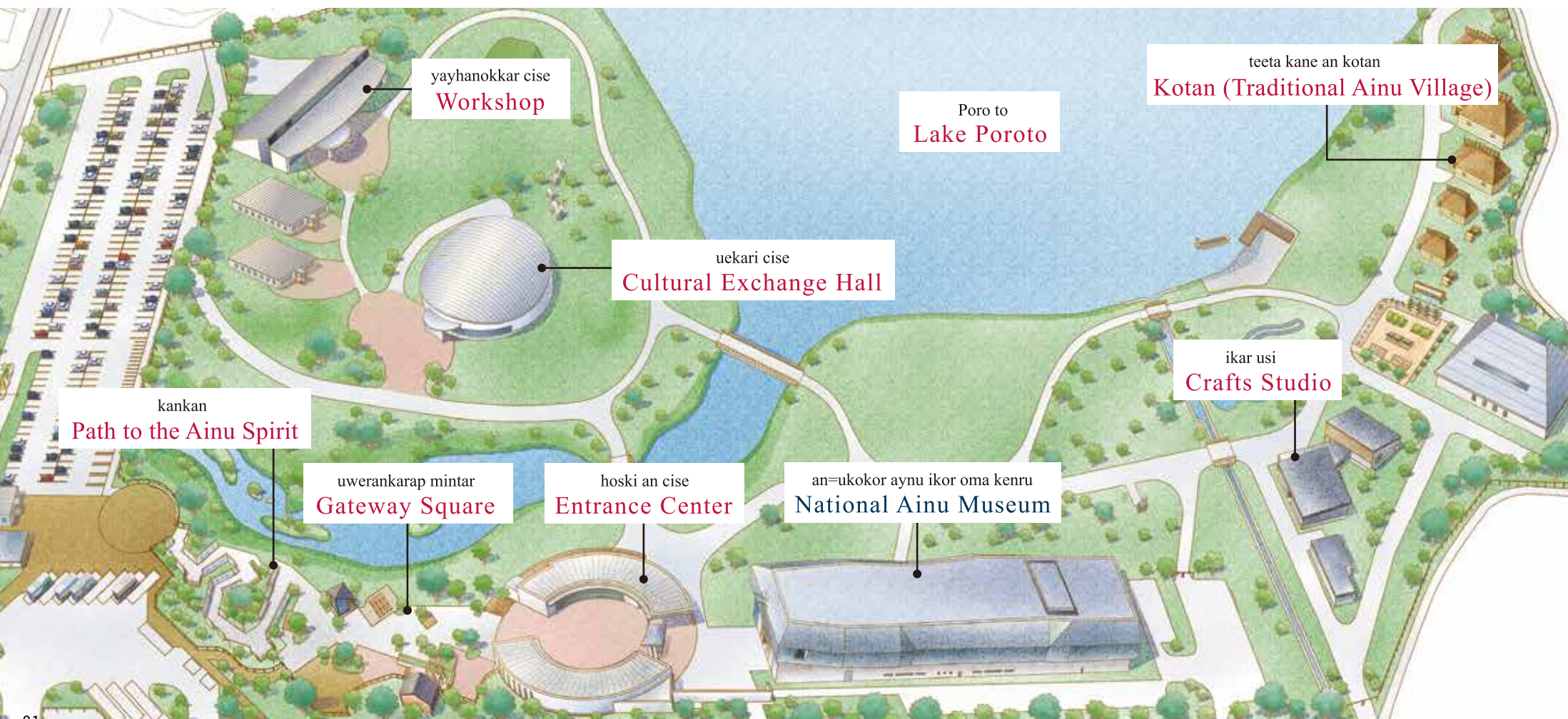
#### Point3 Think

Learn more about the Ainu in relation to fields ranging from ethnology to nature, history, and culture.

### sinnurappa usi Memorial Site



This facility is designed to collect the remains of the Ainu people with the understanding and cooperation of the people concerned, to realize dignified memorial services by the Ainu people, and to properly manage the remains until a formal Ainu system is in place. The structures for memorial events, gravesites, and monuments are on a hill overlooking the Pacific Ocean on the east side of Lake Poroto.







Japan's first national museum featuring the indigenous Ainu people

an=ukokor aynu ikor oma kenru

# National Ainu Museum



## Philosophy

The National Ainu Museum seeks to promote respect for the Ainu as an indigenous people of Japan, to establish proper recognition and understanding of Ainu history and culture both nationally and internationally, and to contribute to the creation and development of new Ainu culture.



### a Our Language Itak

Using sound and video, this section highlights traditional oral literature of the Ainu, the basic structure of the language, and Ainu place names, among other topics.



## Six themed exhibits

The museum exhibits the diverse Ainu cultures within today's society from the unique perspectives of the Ainu people.

- |        |              |          |              |
|--------|--------------|----------|--------------|
| itak   | Our Language | upaskuma | Our History  |
| inomi  | Our Universe | nepki    | Our Work     |
| urespa | Our Lives    | ukoapkas | Our Exchange |

### f Our Exchange ukoapkas

This section is dedicated to trade items, retracing the footsteps of the Ainu people in their exchanges with surrounding peoples. Exhibits also indicate how Japan should envision multicultural coexistence in the future.



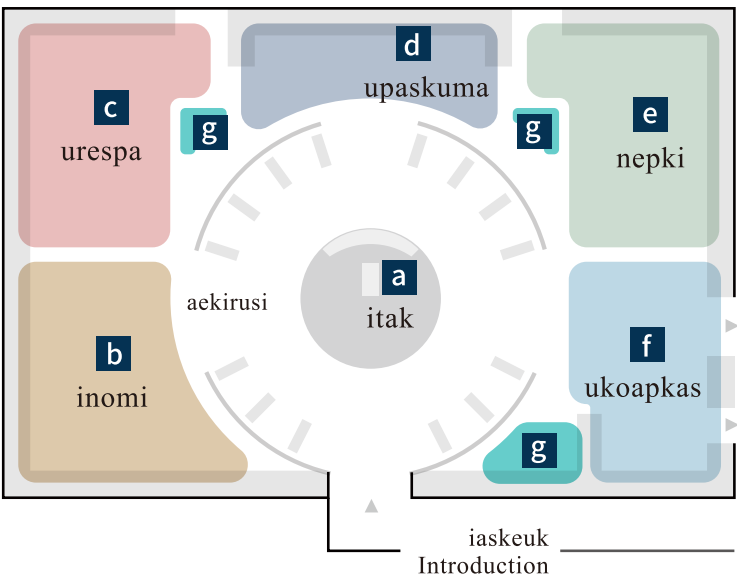
## Library

This is a specialized library with various resources ranging from academic papers and picture books to encyclopedias, mostly relating to Ainu culture and history.



### b Our Universe inomi

This section introduces visitors to the concept of kamuy (god), nature, and life and death, which are all central to the Ainu worldview.



### e Our Work nepki

This section introduces traditional Ainu livelihoods and also various occupations in which Ainu people earn their living today.



### g Interactive Station "tempatempa" ikere usi "tempatempa"



This is an area for children and adults alike to interact with Ainu culture through dioramas, models, tamasay (necklaces) and 3D puzzles of animals.

\* Tempatempa means "touch and feel it" in the Ainu language.

## Theater

The theater shows two short films introducing Ainu culture: Ainu History and Culture and Ainu Crafts Gain Worldwide Attention.

◆ Screenings approx. 20 minutes ◆ Screenings every day



Ainu is used as the principal language for explanatory panels and signs throughout the museum. Audio commentary is also available in Ainu through audio guide equipment and the official Upopoy Guide app.

Explanatory panels, signs, and audio commentary in the museum are provided in up to 8 languages (Ainu, Japanese, English, Chinese [Traditional and Simplified], Korean, Russian, and Thai).

### c Our Lives urespa

This section highlights various aspects and regional variations of Ainu culture, including food, clothing, housing, life course, music, and dance.



### d Our History upaskuma

This section has easy-to-grasp visuals that introduce the range and span of Ainu history that extends into the present.



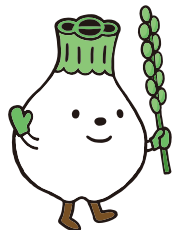




Interactive open-air center

an=ukokor uaynuکور mintar

# National Ainu Park



TureppoN

The National Ainu Park is an interactive open-air center where visitors can experience Ainu culture by viewing traditional Ainu dance and a wide range of other programs as well as participating in hands-on activities.

teeta kane an kotan  
Kotan (Traditional Ainu Village)

Experience traditional Ainu living spaces in reconstructed cise (houses) and watch demonstrations of everyday techniques that were used by the Ainu, such as the use of hunting bows outdoors.



hoski an cise / uwerankarap mintar  
Entrance Center / Gateway Square

There are four eating areas in Upopoy where you can enjoy a range of creative cuisine including meals, snacks, and original desserts made from traditional Ainu ingredients. Each shop offers souvenir items that make perfect gifts for friends, family, and even for yourself.



uekari cise  
Cultural Exchange Hall

Watch demonstrations of Ainu performing arts such as traditional Ainu dance, recognized by UNESCO as an intangible cultural heritage, and oral literature such as yukar (heroic epics).



yayhanokkar cise  
Workshop

Experience Ainu lifestyle culture through musical performances and cooking workshops, etc. In the adjacent annex are dome screens that show panoramic views that various kamuy (spirit-deities) have of the world.



Outdoor Projection Mapping Show

▪ Kamuy Symphonia Summer only

A traditional creation myth of the Ainu is brought to life in a dynamic projection mapping show. Enjoy the unique production of video, sound, glistening objects, and trees.



ikar usi  
Crafts Studio

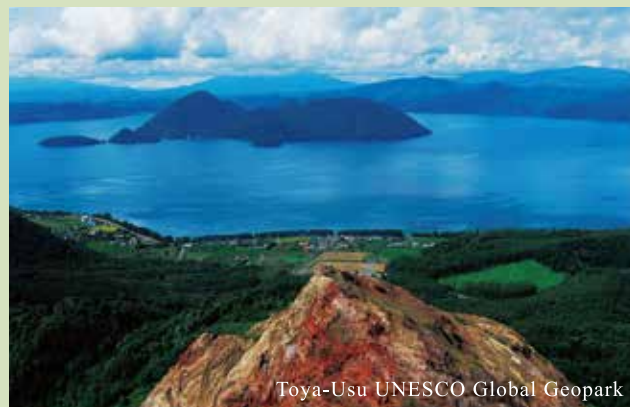
See demonstrations of traditional crafts by artisans and listen to talks as you get an up-close look at techniques that have been handed down through the generations. Visitors can also try Ainu woodcarving and embroidery.





# Incredible sightseeing around Upopoy

## Nature



Toya-Usu UNESCO Global Geopark

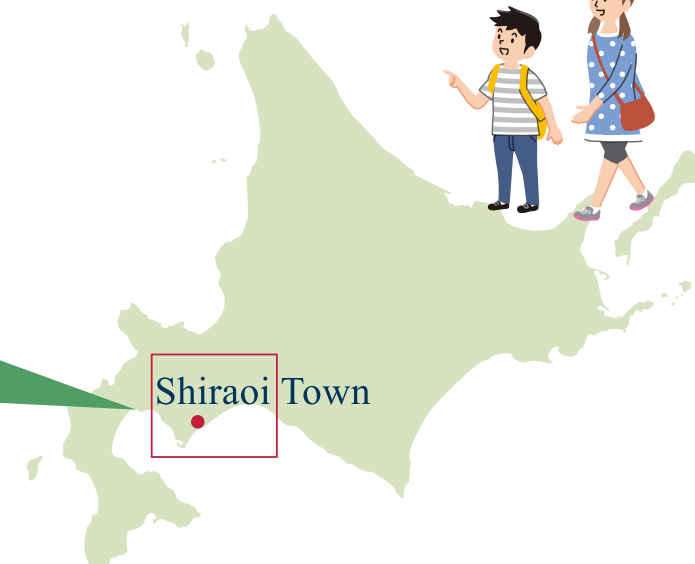
### Access from Upopoy

- Toya-Usu UNESCO Global Geopark (Toyako Town) Approx. 60 min. by car
- Cape Chikyu (Muroran City) Approx. 45 min. by car



TureppoN

Upopoy is located in Shiraoi, and is surrounded by an abundance of nature, hot springs, activities, and cuisine to enjoy.



Shiraoi Town

## Activities



Muroran factory night view / Hakucho Bridge cruise

### Access from Upopoy

- Canoeing on Lake Shikotsu (Chitose City) Approx. 40 min. by car
- Muroran factory night view / Hakucho Bridge cruise (Muroran City) Approx. 45 min. by car
- Indigo dyeing in Date City Approx. 60 min. by car

## Hot Springs



Noboribetsu Onsen

### Access from Upopoy

- Kojohama Onsen (Shiraoi Town) Approx. 25 min. by car
- Noboribetsu Onsen (Noboribetsu City) Approx. 40 min. by car
- Karurusu Onsen (Noboribetsu City) Approx. 40 min. by car
- Toyako Onsen (Toyako Town) Approx. 60 min. by car
- Kitayuzawa Onsen (Date City) Approx. 50 min. by car

## Dining

Enjoy an abundance of regional ingredients, including Shiraoi beef, Kojohama pollock roe, and other delicious seafood. Stylish restaurants in the area specialize in foods using local ingredients.

Shiraoi beef



Kojohama pollock roe



Restaurants specializing in local ingredients



Seafood







## Recommended places in Shiraoi Town

Shiraoi Town Tourist Association: <https://shiraoi.net/spot/>

### Historical Remains of the Sendai Clan Shiraoi Motojin-ya

This fort was built in Shiraoi by the Sendai clan in 1856 under the orders of the Edo shogunate as a defense against Russian advances from the north when Japan ended its isolationist foreign policy.

<https://shiraoi.net/spot/仙台藩白老元陣屋跡/>



### Lake Kuttara

Lake Kuttara is a round caldera lake with a circumference of about 8 km, located in one of the Special Zones of Shikotsu-Toya National Park. The transparency of the water in this beautiful lake is second only to Lake Mashu.

<https://shiraoi.net/spot/倶多楽湖/>

### Three Waterfalls of Shiraoi

Five main rivers flow through Shiraoi, but there are many waterfalls upstream.

<https://shiraoi.net/spot/様々な滝/>



Inkura Falls

Shiraoi Falls

Shadai Falls

## Access

Approximately one hour from Sapporo,  
and 40 minutes from New Chitose Airport

### ◆ By air ✈

Tokyo ▶  
New Chitose Airport

Approx. 1 hr. 40 min.

Osaka ▶  
New Chitose Airport

Approx. 2 hrs.

### ◆ From major transport hubs in Hokkaido 🚗 🚆

Sapporo

Sapporo-Kita  
Interchange

Approx. 1 hr. 5 min.  
via expressway

JR Sapporo  
Station

Approx. 1 hr. 5 min.  
by limited express train

New  
Chitose  
Airport

New Chitose  
Airport Interchange

Approx. 40 min.  
via expressway

JR New Chitose  
Airport Station

Approx. 40 min.  
by limited express train

Noboribetsu

National Route 36

Approx. 40 min. on regular roads  
(estimated time from Noboribetsu Onsen to Upopoy)

JR Noboribetsu  
Station

Approx. 12 min.  
by limited express train

Tomakomai

National Route 36

Approx. 30 min. on regular roads  
(estimated time from central Tomakomai to Upopoy)

JR Tomakomai  
Station

Approx. 15 min.  
by limited express train

Muroran

Noboribetsu Muroran  
Interchange

Approx. 45 min.  
via expressway

JR Higashi  
Muroran Station

Approx. 30 min.  
by limited express train

Hakodate

Onumakoen  
Interchange

Approx. 2 hr. 50 min.  
via expressway

JR Hakodate  
Station

Approx. 3 hr.  
by limited express train

### ◆ Getting to Upopoy from central Shiraoi

From JR Shiraoi Station: Approx. 10 min. walk

From Shiraoi Interchange: Approx. 10 min. by car

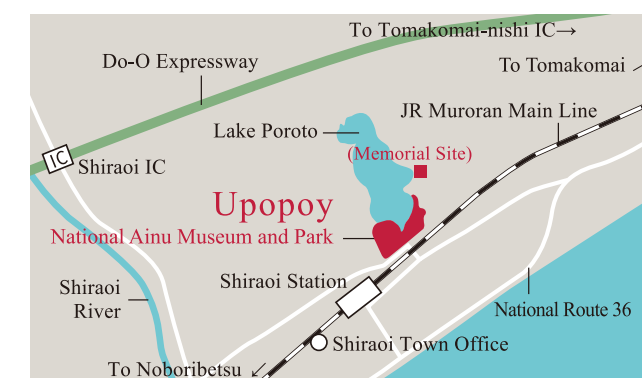
Each day, 31 limited express trains  
(Hokuto, Suzuran) stop at JR Shiraoi Station

### ◆ Paid Parking

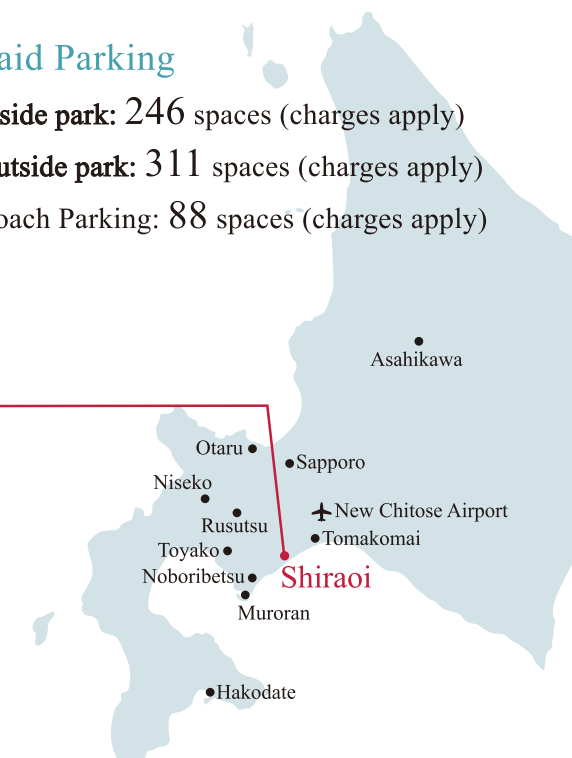
**Inside park:** 246 spaces (charges apply)

**Outside park:** 311 spaces (charges apply)

Coach Parking: 88 spaces (charges apply)



Address: 2-3 Wakakusa-cho, Shiraoi Town



\* The above travel times are estimates for reference purposes only and do not include transfer times.